

## Leapfrog 3D geological modelling software

Leapfrog Version 2.3  
updates...

# Structural data modelling...

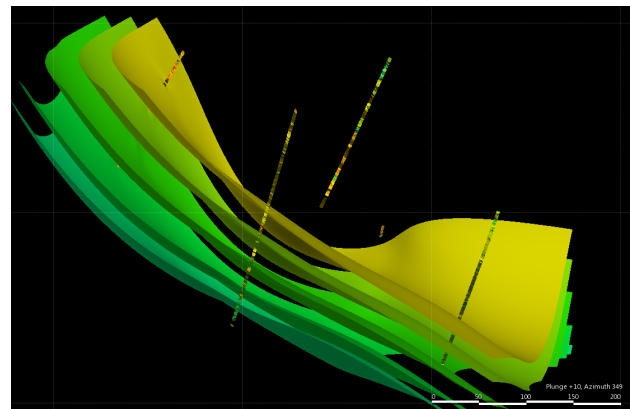
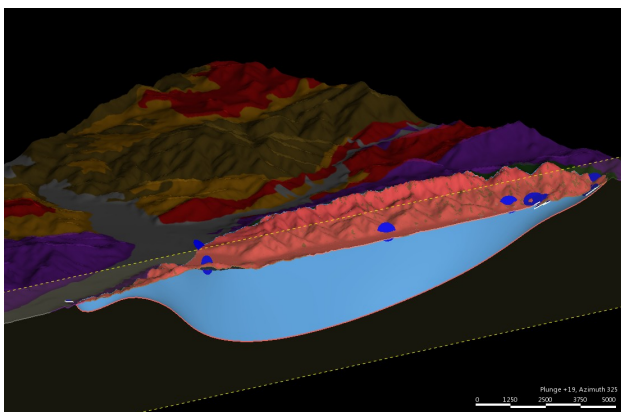
Structural data can provide important clues to continuity and orientation of mineralization trends. The updated functionality within Leapfrog version 2.3 for modelling structural data enables more comprehensive interpretation of the geology.

With version 2.3 you can now:

Model surfaces from dense structural data. Leapfrog can disentangle the average structure from noise within datasets.

Televue data can be modelled in Leapfrog as opposed the traditional method of digitising.

The form surfaces opposite took **less than 5 minutes** to generate.



Use Leapfrog to model contacts including faults and folds from polylines and structural measurements collected along and near the contact.

The resulting surfaces produce more geologically accurate models which better aid targeting.

Leapfrog's slicer tool (opposite) allows a cross-section view of the results.

For a full list of Leapfrog version 2.3 new functionality and performance enhancements, please refer to the release notes in the Leapfrog installer. Download Leapfrog version 2.3 from [www.leapfrog3d.com](http://www.leapfrog3d.com) today.

For more information email us at [info@leapfrog3d.com](mailto:info@leapfrog3d.com)

Zaparo Ltd.®

[www.leapfrog3d.com](http://www.leapfrog3d.com)